



Sonomed Escalon™

# See Every Detail



**VuMAX HD™**  
**Simply The Best.**  
**Period.**

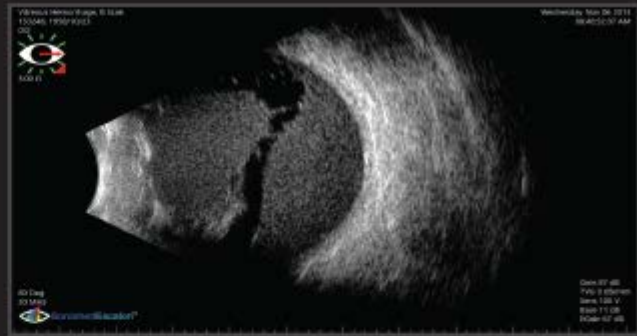


[www.sonomedescalon.com](http://www.sonomedescalon.com)  
+1 516-354-0900



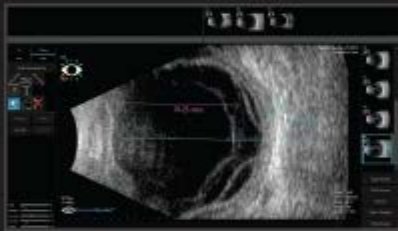
# Unparalleled Image Quality.

Hands down the gold standard in ophthalmic ultrasound. Unparalleled UBM and B-scan image quality with next generation electronic hardware, magnetic drive low-noise probes, optimized and customizable scan settings, peerless signal processing, and integrated Enhanced Focus Rendering™ software, and large ultra high resolution screen allows you to capture both crisp still images and record video that can be carefully reviewed frame-by-frame.



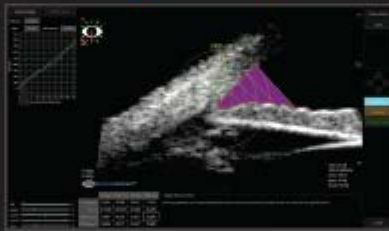
## Advanced Analytics.

### Measurement and Annotation



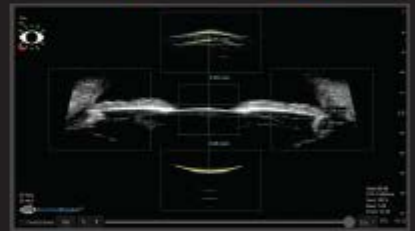
Extensive post-processing tools: Angle Caliper, Distance Caliper, Area Measurement, A-Scan Overlay, Text Editor, Arbitrary A-Scan, Angle Analysis, Eye Tracking

### Quantitative Angle Analysis



Accurately measure key parameters of the angle to easily track structure properties of time and assess difference during mydriatic and miotic conditions.

### UBM AI Eye Tracking



Real-time auto detection of angle-to-angle, sulcus-to-sulcus, lens thickness, ACD, corneal thickness, pupil size with quantitative metrics for proper scan alignment.

## Optimized Scan Settings.

With VuMAX HD, easily select from preset scan settings that zoom and optimize imaging at the specific area of interest or customize settings to your own liking.

### B-Scan

Orbit  
Vitreous Body  
Retina Surface  
Choroid

### UBM

Sulcus-to-Sulcus  
Angle Detail  
Motion Picture  
High Resolution  
ICLguru

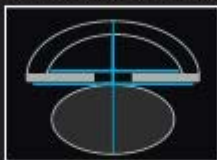
Elegant user interface provides useful tools that are intuitive, simple, and efficient to use. Time-saving features such as selectable patient database display to easily search and access archived exam records. Document scan orientation with the single click of a button. Replay videos in real-time, slow motion, or frame-by-frame. Superimpose A-scan trace, perform linear and angle measurements, and annotate onto B-scan and UBM images. Auto calculation of axial length average and standard deviation, IOL formulas, and lens database for biometric A-scan.

**Elegant.  
Intuitive.  
Exceptional.**

## UBM AI™ + ICLguru® AI POWERED SIZING FROM SONOMED ESCALON

The VuMAX HD is the world's premier system for use with ICLguru, the most advanced and accurate AI-powered ICL sizing calculator, that utilizes next-generation modeling and image analysis of well-aligned high-resolution UBM images to automatically assess 25+ parameters. The VuMAX HD provides exclusive UBM AI tools to help users quickly and confidently obtain well-aligned images needed for accurate ICLguru calculations.

**Select The  
Right Lens,  
The First Time,  
Every Time.™**



### UBM AI Eye Tracking

Realtime auto analysis and measurement of several anterior segment anatomical values, including corneal thickness, ACD, lens thickness, STS, ATA, pupil diameter.



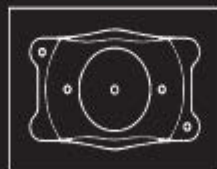
### UBM AI Align Assist

Realtime intuitive on-screen instruction helps users quickly and easily capture optimally-aligned scans, imperative for accurate ICLguru results.



### UBM AI Auto Capture

Auto compiles composite clip of best scan frames to ensure maximum accuracy, simplify scanning process, and minimizing overall time.



### UBM AI ICLguru Interface

Auto upload patient imaging and data, create patient record, and auto populate patient demographics and ACD, ATA, and aRise measures, and launch ICLguru web interface. Simple, quick, and efficient, saving time, preventing errors, and ensuring the very best results.



## As You Like It.

Select any combination of modalities, including biometric A-scan, posterior B-scan, diagnostic A-scan and/or UBM. Your choice of specialized probes and transducers focus on the area of interest and provide greatest resolution and accuracy.

## B-Scan

Ultrasound Probes	Sealed magnetic-drive B-probes with 12 MHz or 20 MHz B-probes with focused transducers
Scan Settings	Selectable scan setting profiles to optimize image quality, including presets for orbit, vitreous body, retina surface, and deep retina / choroid
Scan Sampling	256-ray scan with 2048 sample points for each ray (> half-million sample points per transducer sweep)
Scan Controls	Fully adjustable time-varied gain (TVG), baseline, log gain, and exponential gain (e-gain) Adjustable velocity (for eyes with silicone oil)
Scan Position Indicator	One-click selection of axial or longitudinal scan clock position with eye model confirmation Free-form text for scan position details that auto annotate onto images and video clips
Video Clips	Capture and store custom length video clips up to 20 fps Replay in real-time, scalable slow motion, or one frame at a time Store up to 50 video clips per exam, easily add or remove video clips from exam record
Images	Separately save any number of individual frames from video clips as images, complete with annotation(s)
A-Scan Trace	Superimpose arbitrary A-scan trace onto images with a single button click
Measurement	Unlimited measurements using linear calipers and angle measurement tool
B-Biometry	Automatically populates B-Biometry parameters into preferred formulas for calculation of IOLs

## UBM

Ultrasound Probes	HD magnetic-drive water path probe with 35 MHz or 50 MHz focused transducers
Scan Settings	Selectable scan setting profiles to optimize image quality, including presets for sulcus-to sulcus, angle detail, motion picture, and high resolution
Scan Sampling	256-ray scan with 2048 sample points for each ray (> half-million sample points per transducer sweep)
Scan Controls	Fully adjustable time-varied gain (TVG), baseline, log gain, and exponential gain (e-gain)
Scan Position Indicator	One-click selection of axial or longitudinal scan clock position with eye model confirmation Free-form text for scan position details that auto annotate onto images and video clips
Video Clips	Capture and store custom length video clips up to 20 fps Replay in real-time, scalable slow motion, or one frame at a time Store up to 50 video clips per exam, easily add or remove video clips from exam record
Images	Separately save any number of individual frames from video clips as images, complete with annotation(s)
A-Scan Trace	Superimpose arbitrary A-scan trace onto images with a single button click
Measurement	Unlimited measurements using linear calipers and angle measurement tool
Analysis Tools	Quantitative Angle Analysis UBM AI Eye Tracking UBM AI Align Assist UBM AI Auto-Capture Auto ICLguru Interface
Accessories	Set of 4 immersion cups included

## A-Scan

Ultrasound Probe	10 MHz A-probe
Scan Modes	Selectable immersion or direct contact A-scan with manual or automatic capture (cataract, dense cataract, aphakic, and pseudophakic modes)
Measurements	Auto calculation of axial length, anterior chamber depth, lens thickness, and vitreous length Individual zone velocity selection Axial length average and standard deviation provided for up to 10 scans per exam On-board calibration
IOL Formulas and Selection	Refractive IOL Formulas: Binkhorst, Regression-II, Theoretic/T, Holladay, Hoffer-Q, Haigis Post-Refractive IOL Formulas: Latkany Myopic, Latkany Hyperopic, Aramberri Double-K Integrated customizable lens database with selectable user profiles
Diagnostic A-Scan	Optional diagnostic A-scan module 8 MHz diagnostic A-scan probe

## General

Controls	USB foot pedal Wireless keyboard and mouse
Computer	Intel Core i7 Processor Equivalent or Better
System Memory	8 GB High-Performance DDR RAM
Hard Drives	Two (2) RAID-configured 1 TB enterprise class drives for data storage Separate SATA SSD solid-state drive for operating system
Operating System	Windows 11 Pro
Connections	Five (5) USB 3.0 ports GigE Ethernet LAN port HDMI, serial, VGA, and RJ-45 ports
Data Exchange	JPG, AVI, or EXM export DICOM-compliant (optional)
Printers	Any Windows-compatible printer
Reports	Detailed exam reports for printing or exporting
Console Dimensions	13.5" w x 13.5" d x 3.0"h (34.3 cm x 34.3 cm x 7.6 cm) 13.0 lbs (5.9 kg)
Power	100-240 VAC, 50/60 Hz auto-switching medical-grade power supply



SonomedEscalon™

www.sonomedescalon.com  
+1 516-354-0900  
info@sonomedescalon.com  
865 Merrick Ave., Suite 305  
Westbury, NY 11590 USA



PROUDLY MADE IN THE USA