

User Guide

What Makes Well-Aligned UBM Scans: Leveling Probe

Updated 4 September 2025

Sonomed Escalon UBM AI and its Eye Tracking, Align Assist, and Auto Capture tools help users obtain the very best-aligned UBM images leading to the most efficient and accurate ICL Guru calculations. Properly positioning the UBM probe is what yields well-aligned scans, and there are 4 simple considerations: 1) Centering the probe over pupil front-to-back, 2) Proper vertical positioning / scan depth, 3) Centering image side-to-side, and 4) Horizontally-balancing with no tilt.

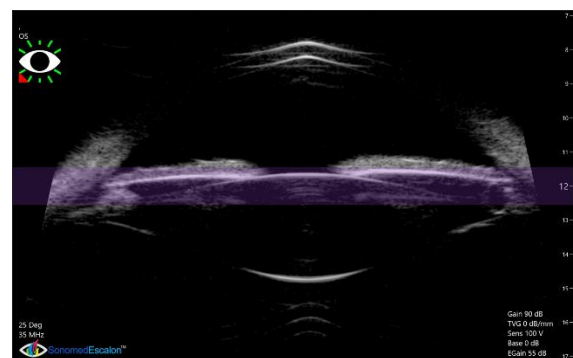
Here are some steps to keep in mind to achieve a level probe with no tilt:

1 PROPER SET UP

- **Position the patient's head near the UBM system with you having a clear and straight line of sight to the display.** This prevents you from straining to see the screen, which may cause you to inadvertently misalign the probe.
- **Stabilize your hand with a point of contact on the patient's head.** This will steady the probe and prevent jitter and fatigue.

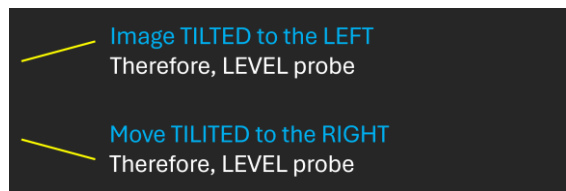
2 ENSURE APPROPRIATE ANATOMICAL LANDMARKS ON UBM IMAGE

- **Ensure image is horizontally level.** Ensure image is level with iris plane staying within light purple focal zone on both sides of image.



3 UTILIZE UBM AI ALIGNMENT INDICATORS

- **Scan alignment level indicator is shown to indicate whether and how image needs to be positioned.** Color-coded level indicator is shown which indicates whether and how UBM image is tilted.



Learn More

Learn more about well-aligned UBM scans and how Sonomed Escalon UBM AI can help your practice obtain such scans with consistency, efficiency, and confidence. Check out www.sonomedescalon.com/ubmai-iclguru or contact us +516-354-0900 or info@sonomedescalon.com