



Sonomed Escalon™

MASTER-VU

Portable Ophthalmic
B-Scan



www.sonomedescalon.com
info@sonomedescalon.com
+1 516-354-0900

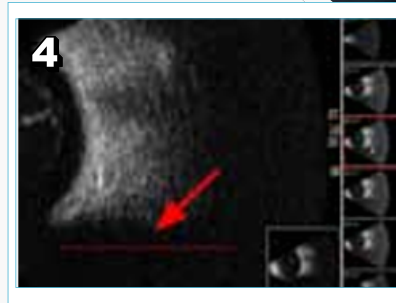
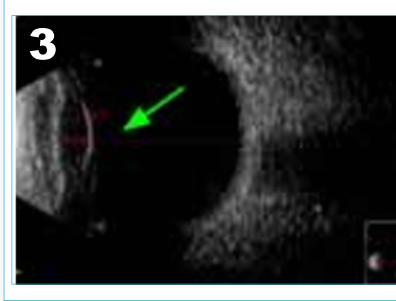
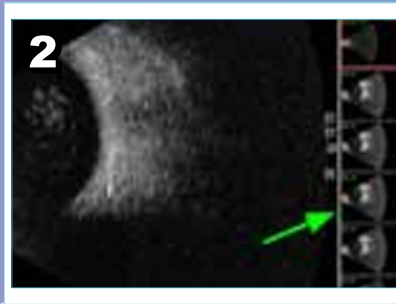


PROUDLY MADE IN THE USA

Portable For Use
on Multiple Computers

Quick and Easy
USB Connection to PC

Powerful and Intuitive
Master-Vu Software



Features:

1. General:

Models:

- MV5600 Master-Vu B-Scan

Features:

- Quick and Easy USB Connection
- Touch Screen Compatible
- Integrated Patient Database
- Intuitive and Powerful Software
- Personalized Exam Reports

2. B-Scan:

Probe:

- Transducer Frequency: 12MHz
- On-Probe Activation Switch

Tools:

- Adjustable Zoom, Pan, and Area Select
- Brightness and Contrast Control
- Near/Mid/Far Gain Control
- On-Screen Annotation

Data Acquisition and Display:

- Scanning Method: Sector
- Frame: 60°, 256 lines, 2000 Samples/Line
- Frame Rate: 30 fps (max)
- Adjustable Acoustic Output for Improved Penetration (Scan Depth: 30-60 mm)
- Capture Frames (.bmp or .jpg) or Video Clips up to 100 Frames (.wmv)
- 256 Levels Gray Scale

Measurements:

- Distance: Multiple Calipers Precision: 0.046 mm
- Angle: Multiple Calipers and Vertex Precision: 1/2°

Resolution:

- Electronic: 0.015mm (max) • Clinical: 0.1mm

Data Management:

- Frames (.bmp or .jpg)
- Video Clips up to 100 Frames (.wmv)

- 1 Master-Vu B-Scan
- 2 Easy Navigation of Thumbnail Images and Clips
- 3 Caliper Tools for Multiple Simultaneous Distance and Angle Measurements
- 4 On screen Annotation
- 5 IOL Comparisons with Extensive EZ-Lens Database

www.sonomedescalon.com
info@sonomedescalon.com
+1 516-354-0900